

新潟県 (SC-02E) 1

エクシズ株式会社

January 14, 2013

Conducted on: December 13, 2012
Duration: 18 minutes, 56 seconds
Number of devices: 1
Device/Operator: SC-02E / NTT DOCOMO

Contents

Contents	2
1 Introduction	3
2 Metrics Summary	3
3 Device Comparison	3
4 Device Details	5
SC-02E	5

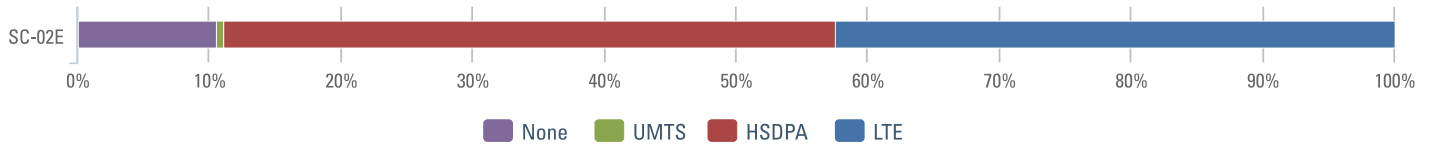
Introduction

新潟県の SC-02E および XenSurvey によるフィールドテスト自動計測レポート docomo LTE Xi 下り
最大 100Mbps サービス : フィールドテスト特集【1】はじめに <http://app-coming.jp/ja/articles/detail/347>
【7】新潟県での測定結果レポート <http://app-coming.jp/ja/articles/detail/353>

Metrics Summary

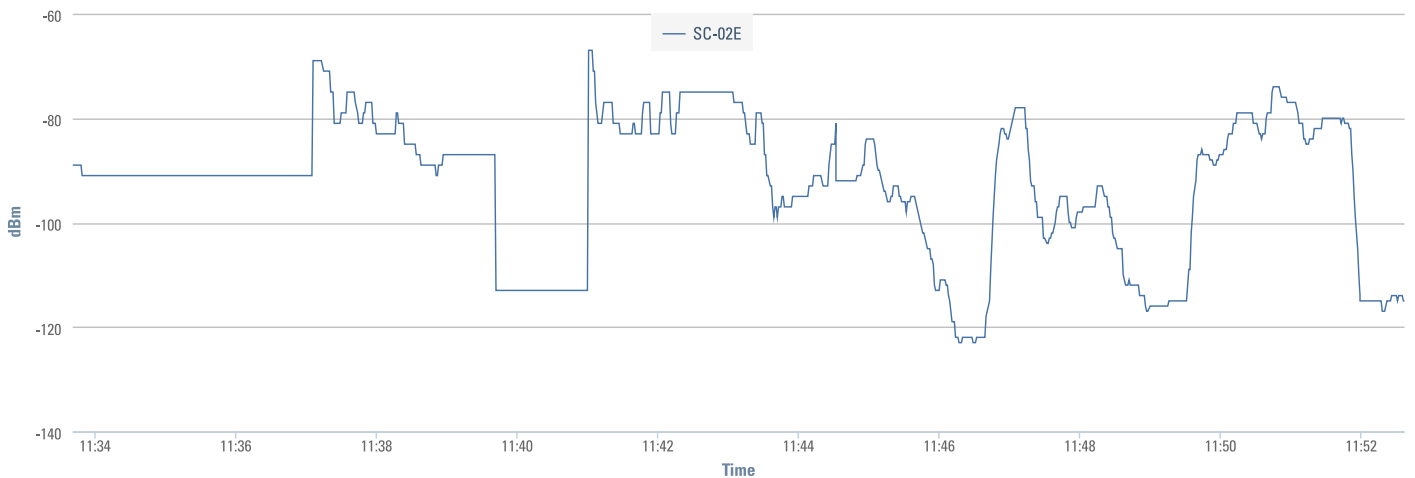
Device	Operator	Signal	Latency	Availability
SC-02E	NTT DOCOMO	-92 dBm	269 ms	89%

Network Mode

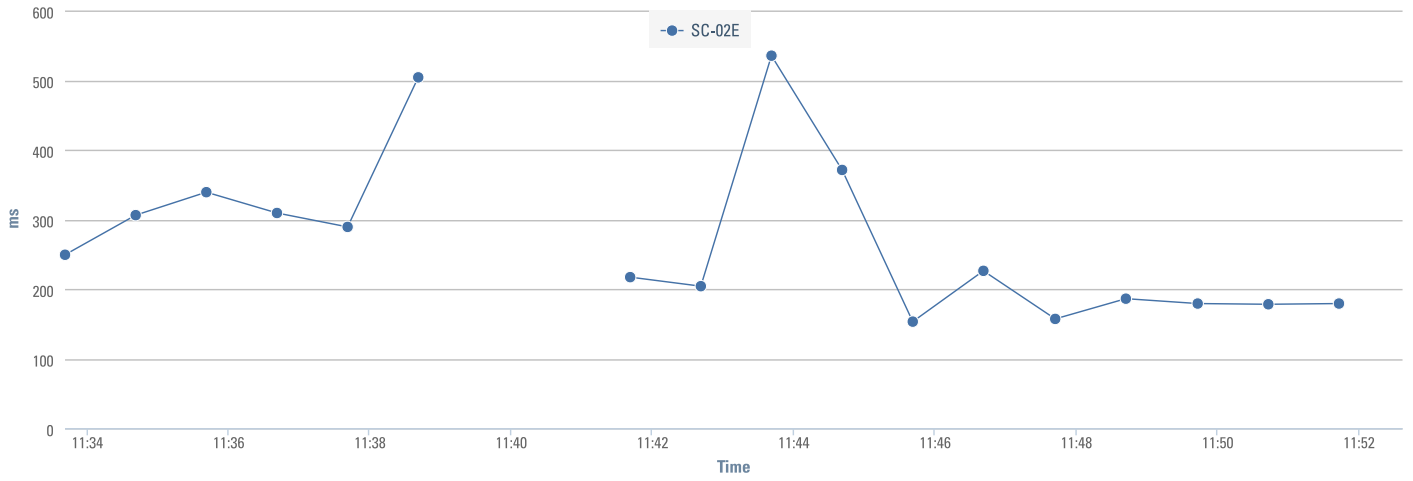


Device Comparison

Signal



Latency



Device Details

SC-02E

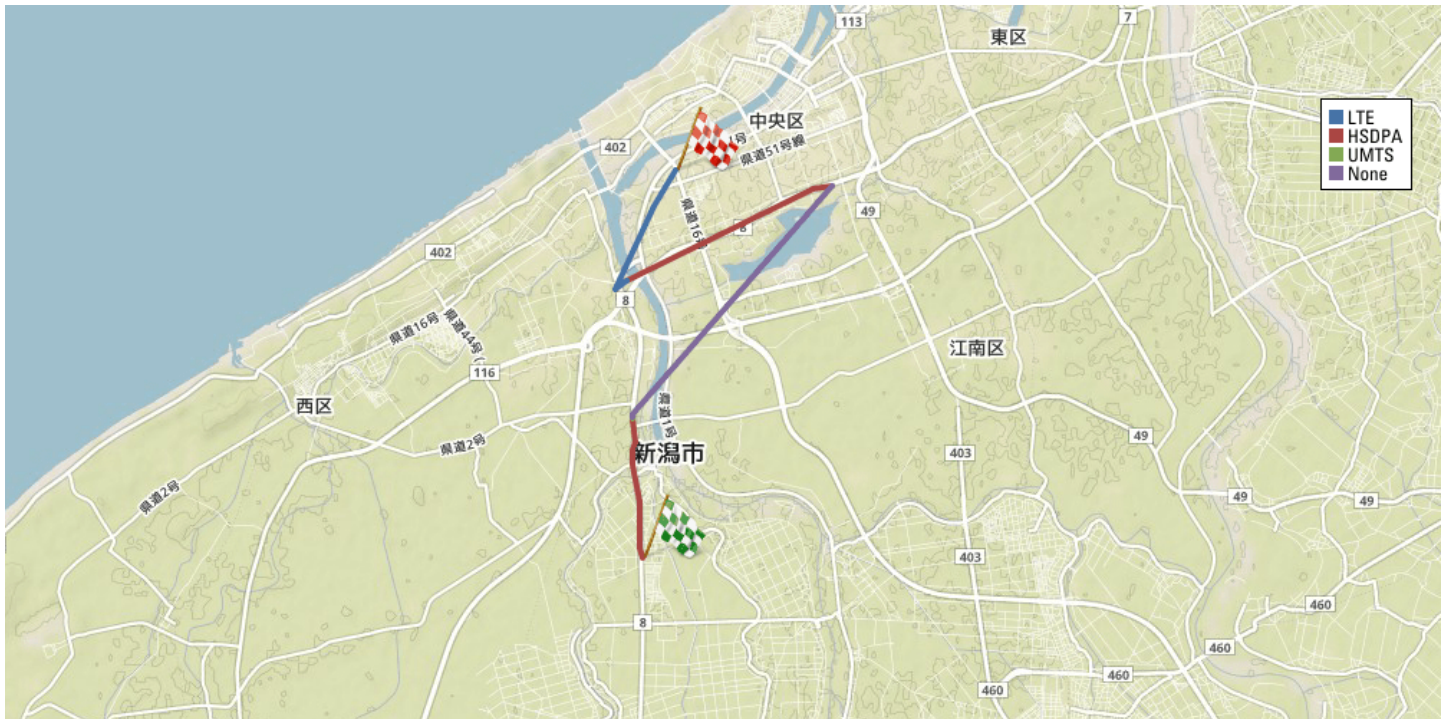
Overview

Device Name: SC-02E
Operator: NTT DOCOMO
Device IMEI: 353919050925670

Averages

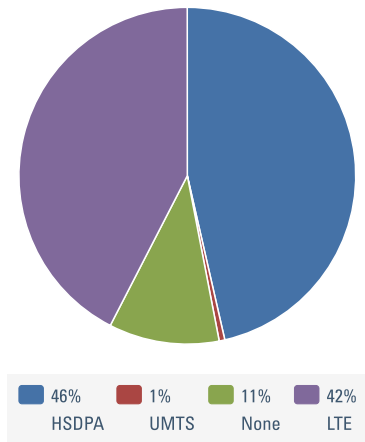
Availability	Signal	Latency	Speed
100%	▲ -67 dBm Av. -92 dBm ▼ -123 dBm	▲ 153 ms Av. 269 ms ▼ 535 ms	▲ 18 MPH Av. 9 MPH ▼ 0 MPH

Network Mode Map

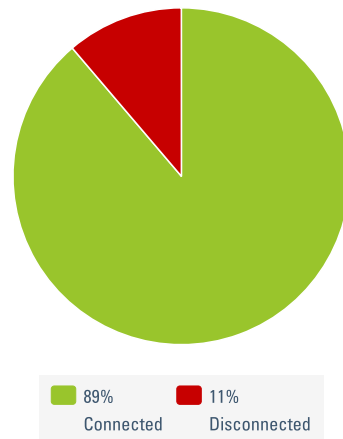


Metrics

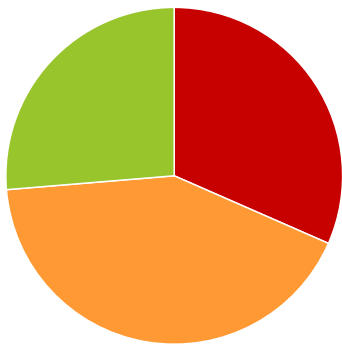
Network Mode



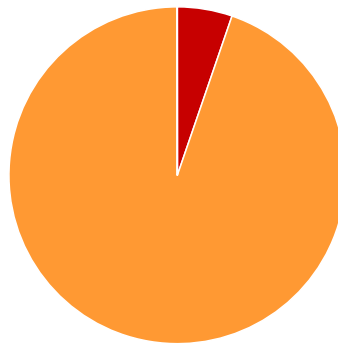
Availability



Latency



Packet Loss



Jitter

